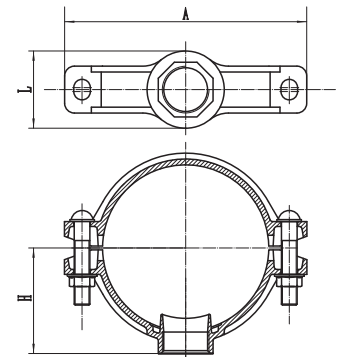
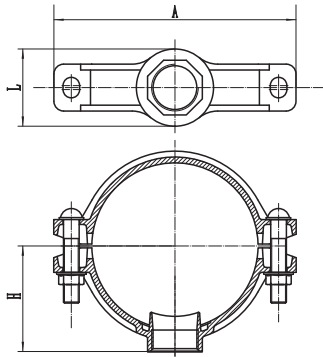


**Threaded Mechanical Tee**

Nominal Size mm/in	Pipe O.D mm/in	Dimensions			Pipehole Dia (Φ-mm)	Bolt/Nut Size (mm)	Working pressure Psi
		A mm	L mm	H mm			
50×15	60.3×21.3	120	54	50	30	3/8×2 (M10×50)	300
2×1/2	2.375×0.825						
50×20	60.3×26.7						
2×3/4	2.375×1.05						
50×25	60.3×33.7	120	64	50	38		
2×1	2.375×1.327						
50×32	60.3×42.4	120	72	55	46		
2×1 1/4	2.375×1.669						
50×40	60.3×48.3	120	72	63	46		
2×1 1/2	2.375×1.9						
65×15	73×21.3	139	54	58	30		
2 1/2×1/2	2.375×0.825						
65×20	73×26.7	139	54	58	30		
2 1/2×3/4	2.875×1.05						
65×25	73.0×33.7	139	65	60	38		
2 1/2×1	2.875×1.327						
65×32	73.0×42.4	139	72	60	46		
2 1/2×1 1/4	2.875×1.669						
65×40	73.0×48.3	139	79	60	53		
2 1/2×1 1/2	2.875×1.9						
65×15	76.1×21.3	139	54	58	30		
2 1/2×1/2	3×0.825						
65×20	76.1×26.7	139	54	58	30		
2 1/2×3/4	3×1.05						
65×25	76.1×33.7	139	65	60	38		
2 1/2×1	3×1.327						
65×32	76.1×42.4	139	72	60	46		
2 1/2×1 1/4	3×1.669						
65×40	76.1×48.3	139	79	60	53		
2 1/2×1 1/2	3×1.9						
80×15	88.9×21.3	155	59	66.5	30		
3×1/2	3.5×0.825						
80×20	88.9×26.7	155	59	66.5	30		
3×3/4	3.5×1.05						
80×25	88.9×33.7	155	64	67	38		
3×1	3.5×1.327						
80×32	88.9×42.4	155	72	67	46		
3×1 1/4	3.5×1.669						
80×40	88.9×48.3	155	79	67	53		
3×1 1/2	3.5×1.9						
80×50	88.9×60.3	155	90	67	64		
3×2	3.5×2.375						
100×25	108.1×33.7	167	76	76	38		
4×1	4.250×1.327						
100×32	108.0×42.4	167	83	76	46		
4×1 1/4	4.25×1.669						
100×40	108.0×48.3	167	90	76	53		
4×1 1/2	4.25×1.9						
100×50	108.0×60.3	167	100	78	64		
4×2	4.25×2.375						



## Threaded Mechanical Tee



Nominal Size mm/in	Pipe O.D mm/in	Dimensions			Pipehole Dia (Φ-mm)	Bolt/Nut Size (mm)	Working pressure Psi
		A mm	L mm	H mm			
100×65	108.0×76.1	167	117	105	80	1/2×2-5/8 (M12×65)	300
4×2 1/2	4.25×3						
100×25	114.3×33.7	181	64	79	38		
4×1	4.5×1.327						
100×32	114.3×42.4	181	72	79	46		
4×1 1/4	4.5×1.669						
100×40	114.3×48.3	181	79	79	53		
4×1 1/2	4.5×1.9						
100×50	114.3×60.3	181	90	79	64		
4×2	4.5×2.375						
100×65	114.3×76.1	181	117	105	70		
4×2 1/2	4.5×3						
100×80	114.3×88.9	181	129	83	89		
4×3	4.5×3.5						
125×25	133.0×33.7	205	76	89	38		
5×1	5.250×1.327						
125×32	133.0×42.4	205	83	89	46		
5×1 1/4	5.25×1.669						
125×40	133.0×48.3	205	90	89	53		
5×1 1/2	5.25×1.9						
125×50	133.0×60.3	205	100	89	64		
5×2	5.25×2.375						
125×65	133.0×76.1	205	117	92	80		
5×2 1/2	5.25×3						
125×80	133.0×88.9	205	129	94	92		
5×3	5.25×3.5						
125×25	139.7×33.7	212	76	93	38		
5×1	5.5×1.327						
125×32	139.7×42.4	212	83	93	46		
5×1 1/4	5.5×1.669						
125×40	139.7×48.3	212	90	93	53		
5×1 1/2	5.5×1.9						
125×50	139.7×60.3	212	100	93	64		
5×2	5.5×2.375						
125×65	139.7×76.1	212	117	93	70		
5×2 1/2	5.5×3						
125×80	139.7×88.9	212	129	95	89		
5×3	5.5×3.5						
125×25	141.3×33.7	212	76	93	38		
5×1	5.563×1.327						
125×32	141.3×42.4	212	83	93	46		
5×1 1/4	5.563×1.669						
125×40	141.3×48.3	212	90	93	53		
5×1 1/2	5.563×1.9						
125×50	141.3×60.3	212	100	93	64		
5×2	5.563×2.375						
125×65	141.3×76.1	212	117	115	70		
5×2 1/2	5.563×3						
125×80	141.3×88.9	212	136	118	89		
5×3	5.563×3.5						

## Threaded Mechanical Tee

Nominal Size mm/in	Pipe O.D mm/in	Dimensions			Pipehole Dia (Φ-mm)	Bolt/Nut Size (mm)	Working pressure Psi
		A mm	L mm	H mm			
150×25	159×33.7	233	76	101.5	38	9/16×3 (M14×75)	300
6×1	6.250×1.327						
150×32	159.0×42.4	233	83	101.5	46		
6×1¼	6.250×1.669						
150×40	159.0×48.3	233	90	101.5	53		
6×1½	6.250×1.9						
150×50	159.0×60.3	233	100	101.5	64		
6×2	6.250×2.375						
150×65	159.0×76.1	233	117	105.5	80		
6×2½	6.250×3						
150×80	159.0×88.9	233	129	105.5	92		
6×3	6.250×3.5						
150×100	159.0×114.3	233	157	110	118		
6×4	6.250×4.5						
150×25	165.1×33.7	248	64	106	38	5/8×3-1/3 (M16×85)	300
6×1	6.5×1.327						
150×32	165.1×42.4	248	72	106	46		
6×1¼	6.5×1.669						
150×40	165.1×48.3	248	79	106	53		
6×1½	6.5×1.9						
150×50	165.1×60.3	248	90	106	64		
6×2	6.5×2.375						
150×65	165.1×76.1	248	107	106	80		
6×2½	6.5×3						
150×80	165.1×88.9	248	118	108	92		
6×3	6.5×3.5						
150×100	165.1×114.3	239	157	110	118		
6×4	6.5×4.5						
150×25	168.3×33.7	248	64	106	38	5/8×3-1/3 (M16×85)	300
6×1	6.625×1.327						
150×32	168.3×42.4	248	72	106	46		
6×1¼	6.625×1.669						
150×40	168.3×48.3	248	79	106	53		
6×1½	6.625×1.9						
150×50	168.3×60.3	248	90	106	64		
6×2	6.625×2.375						
150×65	168.3×76.1	248	117	128	70		
6×2½	6.625×3						
150×80	168.3×88.9	248	136	131	89		
6×3	6.625×3.5						
150×100	168.3×Rc4	248	162	139.5	114		
6×4	6.625×4.5						
200×25	219.1×33.7	311	76	131	38	5/8×3-1/3 (2-M16×85)	300
8×1	8.625×1.327						
200×32	219.1×42.4	311	83	134	46		
8×1¼	8.625×1.669						
200×40	219.1×48.3	311	90	134	53		
8×1½	8.625×1.9						
200×50	219.1×60.3	311	100	134	64		
8×2	8.625×2.375						
200×65	219.1×76.1	311	117	156	70		
8×2½	8.625×3						
200×80	219.1×88.9	311	136	158.5	89		
8×3	8.625×3.5						
200×100	219.1×114.3	311	162	167	114		
8×4	8.625×4.5						
250×65	273.0×76.1	379	117	159	80	3/4×3-1/2 (M20×90)	300
10×2½	10.75×3						
250×80	273.0×88.9	379	129	162	92		
10×3	10.75×3.5						

